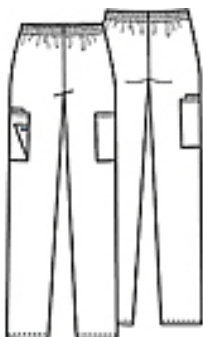




Cherokee Pull-On Cargo Pant 4200

Ceil



This elastic waist utility pant features a natural rise and tapered leg, two cargo pockets, a cell phone pocket and an outside scissor pocket.

| Size | XS | S | M | L | XL | 2XL | 3XL | 4XL | 5XL |
|-------|-------|-------|-------|-------|-------|-------|-------|-------|-------|
| Waist | 25-26 | 27-28 | 29-31 | 32-35 | 36-39 | 40-43 | 44-47 | 48-51 | 52-55 |
| Hip | 35-36 | 37-38 | 39-41 | 42-45 | 46-49 | 50-53 | 54-57 | 58-62 | 63-67 |

Inseam: Regular 31" (available in sizes XS-5XL)

Short 28.5" (available in sizes XS-3XL)

Tall 34" (available in sizes S-2XL)